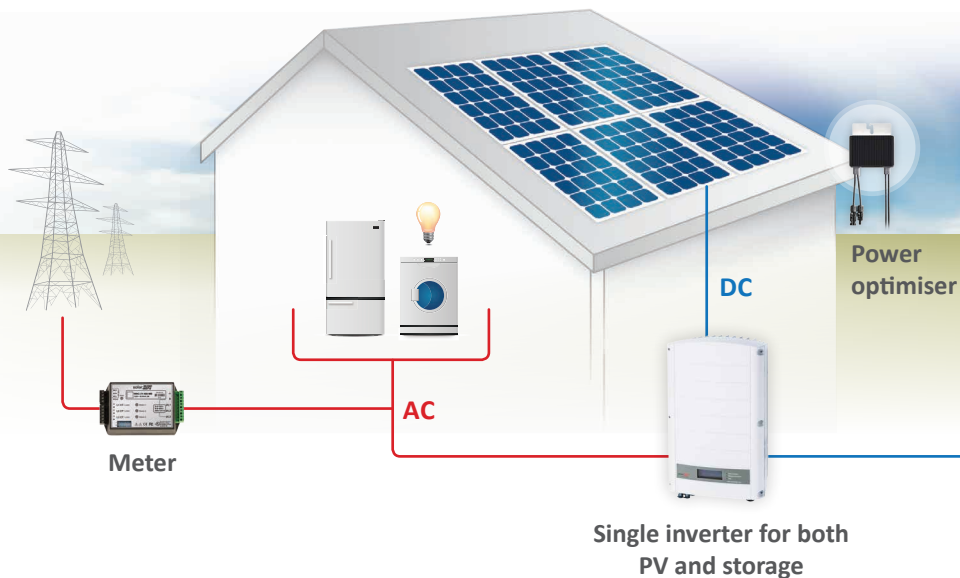


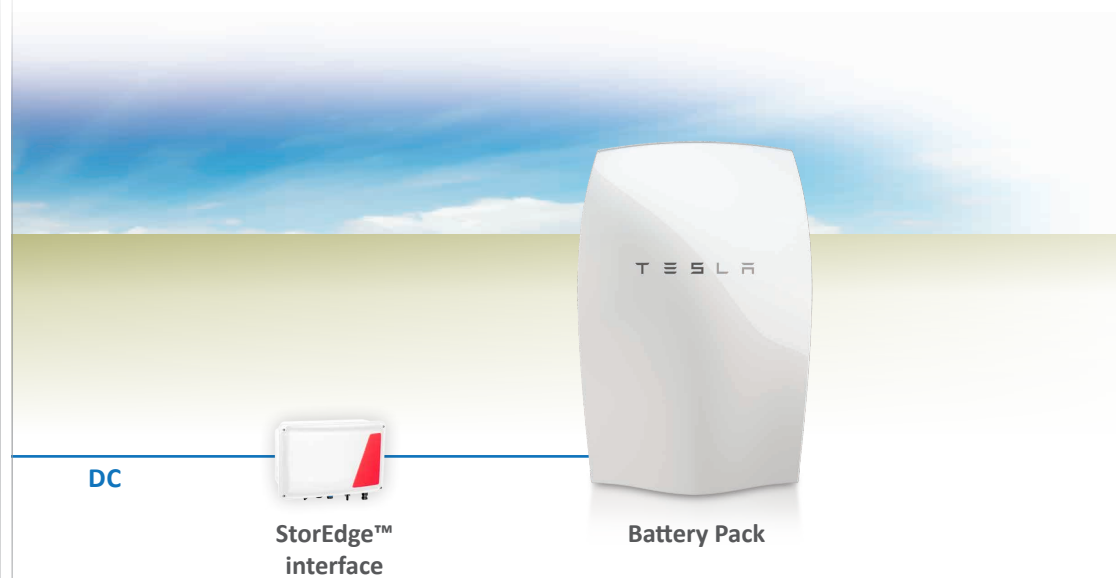
# Optimising for the Future

solar**edge**



## Install SolarEdge today:

Install a SolarEdge PV system today to reduce electricity bills and harvest clean energy.

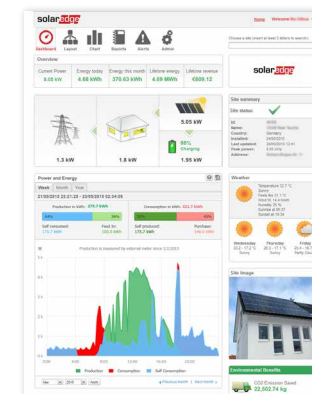


## Upgrade to StorEdge™ later:

As the Australian market moves away from Feed-in Tariffs, installing StorEdge will increase self-consumption and further reduce electricity bills. Unused PV power is stored in the battery and utilised when needed, rather than exported to the grid for little or no compensation.

## Maximise your investment with SolarEdge:

- Put **more panels** on the roof for maximum roof utilisation
- Get **maximum power out of each panel**. With SolarEdge the weakest panel does not affect other panels so does not lead to energy losses
- Monitor the **performance of each panel and of the battery** to maximise system uptime and self-consumption
- **Protect** assets and people through the safety mechanism which is designed to **shut down high DC voltage** during installation, maintenance and emergency situations



Monitor the battery status, PV production and self-consumption data on one dashboard

# Optimising for the Future

## Today - monitoring self-consumption:

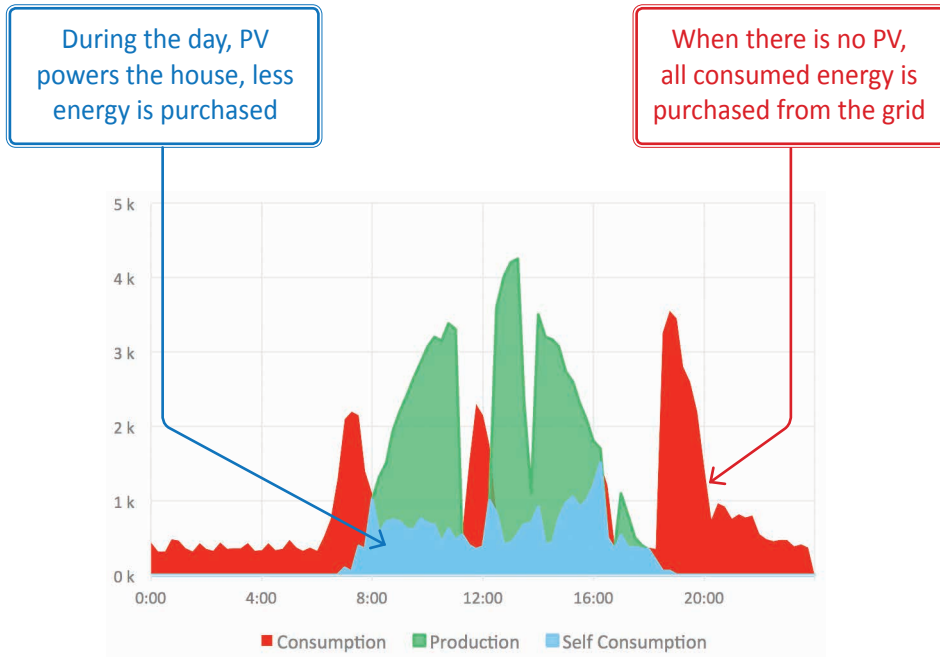
5kW System on April 8, 2015 (before battery installation)

Total produced energy	Total purchased energy	Total consumed energy	Self-consumption level
21.37 kWh	13.57 kWh	20.61 kWh	7.04kWh   33%

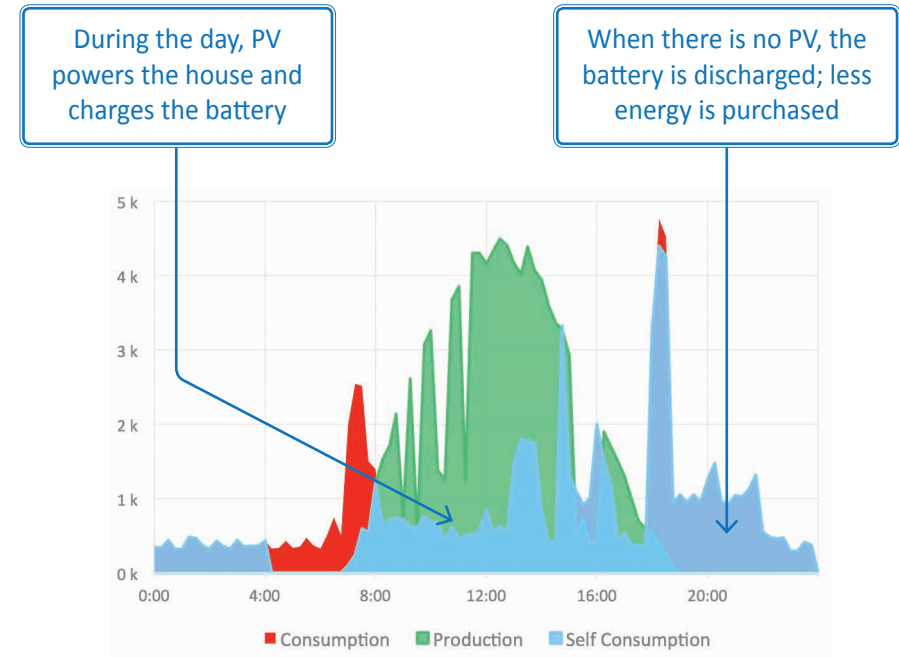
## Later - increasing self-consumption:

5kW System on April 15, 2015 (after battery installation)

Total produced energy	Total purchased energy	Total consumed energy	Calculated self-consumption level
25.41 kWh	3.17 kWh	21.53 kWh	18.36kWh   72%



\* Based on a SolarEdge 5kW residential PV system



\* Based on a SolarEdge 5kW residential PV system